



Villas
de  PUNTA PIEDRA



WELCOME

Our Villas at Punta Piedra are beautiful brand-new residences located within a private community with spectacular views of the Pacific Ocean, a place where comfort, security and proximity to unique places converge with delicious gastronomic experiences.

Living in Punta Piedra, in addition to being comfortable and invigorating, is also convenient, the development is located less than an hour from San Diego, in the heart of Baja California's Golden Coast. Here you can enjoy spectacular sunsets, excellent outdoor areas, grills, fire pits, walkways and a magnificent boardwalk with direct access to La Salina sandy beach, all within a peaceful and pet friendly environment.

Punta Piedra was carefully designed so that our residents can enjoy a pleasant view while taking advantage of our community's vast features.





LOCATION

Punta Piedra is located just 40 minutes from the San Diego-Tijuana border crossing. The scenic toll road to Ensenada takes you directly to our beautiful residential development, which is built alongside and east of the scenic highway overlooking the Pacific Ocean.

From Punta Piedra you can reach Rosarito in 15 minutes, Valle de Guadalupe in 20 minutes and the beautiful port of Ensenada in 30 minutes. Its strategic location allows you easy access to nearby cities, tourist areas, restaurants, outdoor activities and advocates enjoying our unparalleled coastal climate.



VERY CLOSE TO EVERYTHING

In addition to being an emblematic port, Ensenada is also known for its tourist attractions, such as La Bufadora, a natural geyser driven by waves that reaches up to 30 meters above sea level. The city also has areas for excursions, whale watching and sport fishing, to name a few.





ABOUT PUNTA PIEDRA

The vision that gave rise to Punta Piedra was to provide spaces to live fully, enhancing the natural beauty of the environment. Every aspect of the development was carefully designed to provide a harmonious experience, starting with the distribution of the houses, through the landscaping, the stones placed in the walkways and up to the boardwalk, where as you walk you receive the refreshing sea breeze.

We provide all the tools and our collaborators put their heart and soul into everything they did to create this special space for you to live comfortably and enjoy with your loved ones.





OUR VILLAS

Punta Piedra is a beautiful residential complex of more than more than 85 acres. Its proximity to the sea gives incredible panoramic views of the Pacific Ocean and the beautiful natural environment characteristic of the Baja California coast.

FEATURES

- Underground cabling and utilities
- Houses from 1356 Sq Ft up to 2,055 Sq Ft from 2 to 4 bedrooms
- Terrace with panoramic view on all models

FINISHES

- Equipped kitchen
- Granite and quartz countertops
- Custom Closets with drawer sections

SECURITY

- Gated Community with Patrol 24/7
- Entrance with vehicular access checked

EXCLUSIVITY

- Direct access to sandy beach The Salina
- Private amenities for residents



ONE STORY VILLA

TAURUS

2 BEDROOMS

Our Taurus model is a one-story residence with easy access. It has an open-air terrace, in front framed with a charming pergola that connects directly with the living room area, which is equipped with a fireplace. To expand the living room area, simply open its glass doors and you will have the ideal space to spend with your friends and family.

Land area approx. From 2,744 Sq Ft
Construction area 1,399 Sq Ft
Terrace 473 Sq Ft



ONE STORY VILLA TAURUS 2 BEDROOMS

2 bedrooms
2 full bathrooms
Living room with fireplace
Dining room and kitchen
Master bedroom with walk-in closet and full bathroom
Back yard

Secondary bedroom with closet
Front terrace with pergola and panoramic sea view
Parking for 2 cars
Garage (*upon request*)

AMENITIES



Pool



Jacuzzi



Tennis courts



Fireplace



Controlled access



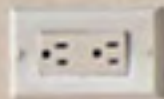
Beach access



FIRST FLOOR



TERRACE



ONE STORY VILLA
CRUX
2 BEDROOMS

This one-story residence is ideal for gardening or outdoor hobbies in a private space. The backyard is equipped with a pergola, which is the perfect setting for your family gatherings and special events. If you slide the glass doors, you immediately connect the garden with the dining room, living room and kitchen. In addition, this house has an open-air terrace with spectacular views of the Pacific Ocean.

Land area approx. From 2,895 Sq Ft
Construction area 1,356 Sq Ft
Terrace 430 Sq Ft



ONE STORY VILLA CRUX 2 BEDROOMS

- 2 bedrooms
- 2 full bathrooms
- Living room with fireplace
- Dining room and kitchen
- Master bedroom with walk-in closet and full bathroom
- Backyard with pergola

- Secondary bedroom with closet
- Front terrace with pergola and panoramic sea view
- Parking for 2 cars
- Garage (*upon request*)

AMENITIES



Pool



Jacuzzi



Tennis courts



Fireplace



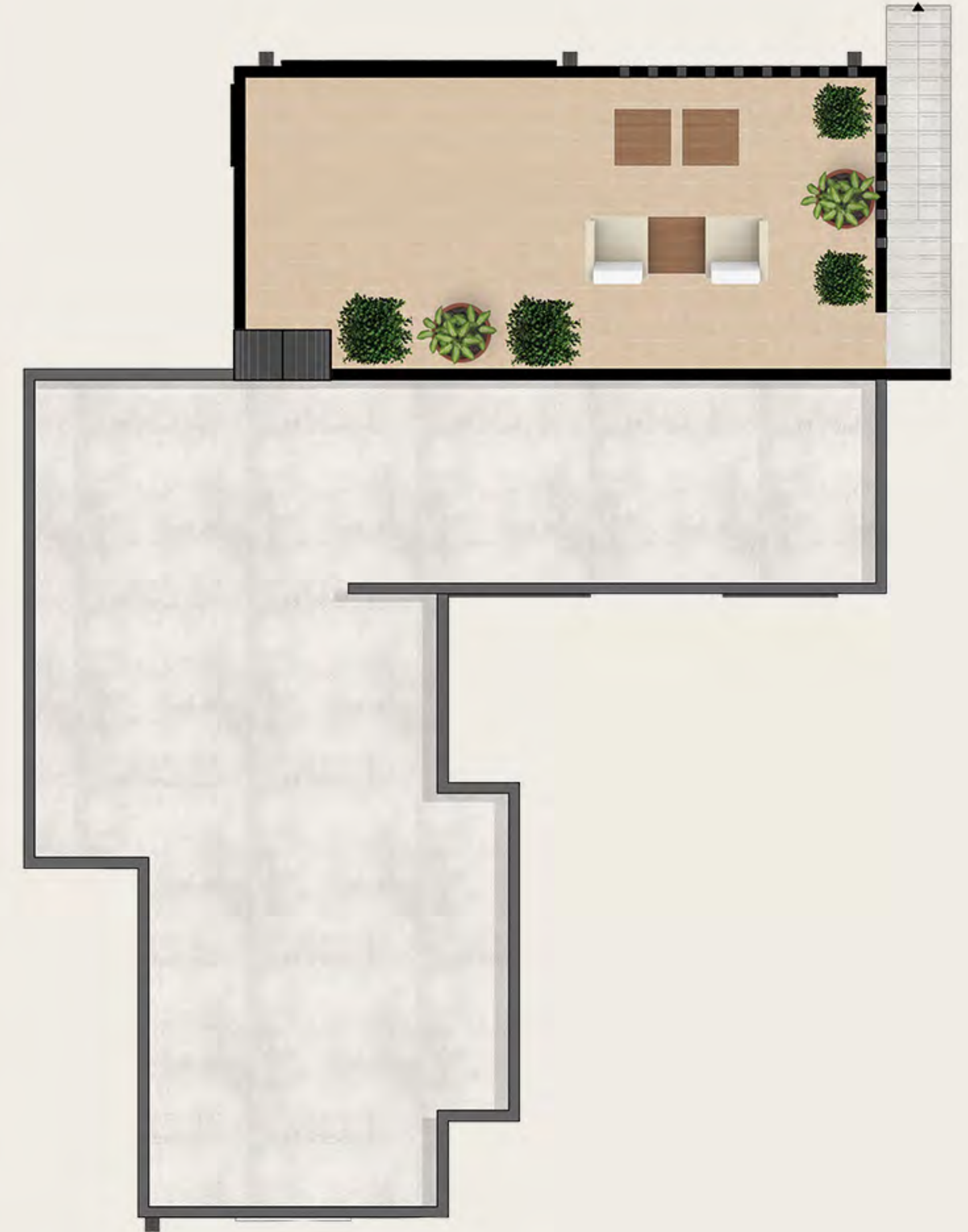
Controlled access



Beach access



FIRST FLOOR



TERRACE



TWO STORY VILLA
GEMINIS
4 BEDROOMS

Our Geminis model is the largest residence within the Villas, it consists of two floors and has a beautiful front garden connected to the front terrace framed with a charming pergola that adds personality to the residence.

Inside you can enjoy a spacious living room that is equipped with a fireplace, large windows and glass doors that allow in abundant natural light. The stylish space allows the flow between the dining room, kitchen and living room, making it ideal for entertaining, for family gatherings or simply to relax.

Land area approx. From 3,121 Sq Ft
Construction area 1829 Sq Ft
Terrace 279 Sq Ft

RENDERING COMING SOON



TWO STORY VILLA

GEMINIS

4 BEDROOMS

FIRST FLOOR

- Living room with fireplace
- Dining room and kitchen
- Secondary bedroom with closet
- Back yard
- Front terrace with pergola and panoramic sea view
- Parking for 2 cars
- Garage (upon request)

SECOND FLOOR

- Master bedroom with walk-in closet and full bathroom
- Bedroom 2
- Bedroom 3
- Direct access to terrace with sea view

AMENITIES



Pool



Jacuzzi



Tennis courts



Fireplace



Controlled access



Beach access



FIRST FLOOR

RENDERING COMING SOON



SECOND FLOOR



TERRACE



TWO STORY VILLA

ARIES

3 BEDROOMS

If you love to host your friends and family or if you prefer to have versatility in the spaces of your home to create different atmospheres, then the Aries model is your best option. This residence has two floors and a terrace on the second floor. The residence is characterized by its spacious living area where the kitchen is connected to the dining room and the living room, which is equipped with a fireplace. The first floor also has a guest bedroom with a custom closet, a separate full bathroom, and a TV room.

Land area approx. From 2,852 Sq Ft
Construction area 1,862 Sq Ft
Terrace 538.19 Sq Ft

RENDERING COMING SOON



TWO STORY VILLA ARIES

3 BEDROOMS

FIRST FLOOR

Sala con chimenea

Comedor y cocina

Recámara secundaria con
clóset

Cuarto de T.V. con opción a ser
una tercera recámara

Baño completo

Patio posterior

Terraza al frente con vista
panorámica al mar

Estacionamiento para 2 autos

Cochera (previa solicitud)

SECOND FLOOR

Master bedroom with walk-in
closet and full bathroom

Direct access to terrace with sea
view

AMENITIES



Pool



Jacuzzi



Tennis
courts



Fireplace



Controlled
access



Beach
access



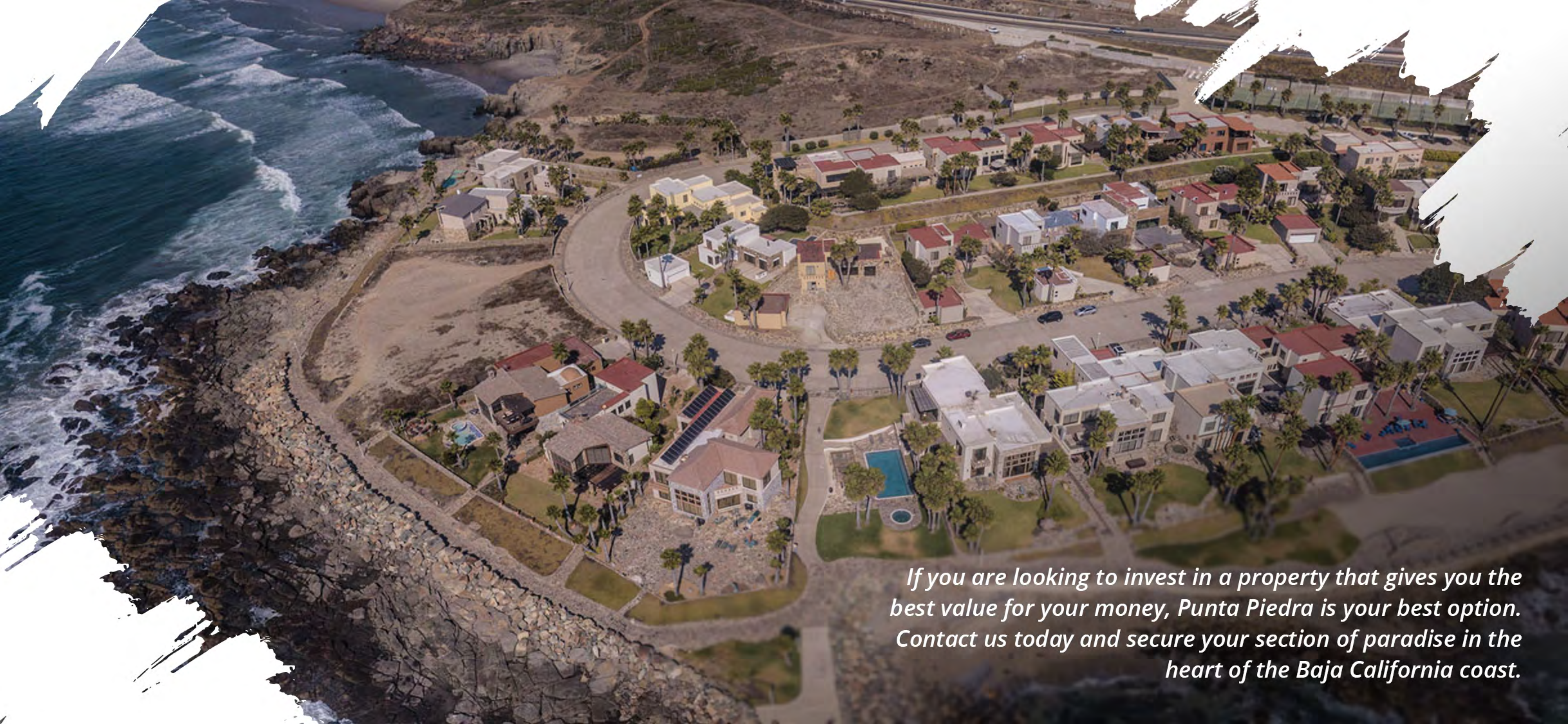
FIRST FLOOR

RENDERING COMING SOON



SECOND FLOOR

TERRACE



If you are looking to invest in a property that gives you the best value for your money, Punta Piedra is your best option. Contact us today and secure your section of paradise in the heart of the Baja California coast.

Villas

de  PUNTA PIEDRA

*Its time to relax and enjoy.
welcome to your new home.*



Parvin Kaidi

USA 619 823 6226 | MEX 646 155 0555

parvin@buybaja.com

www.puntapietra.com

KM 74.5, La Misión, Ensenada,

Baja California, México.

